

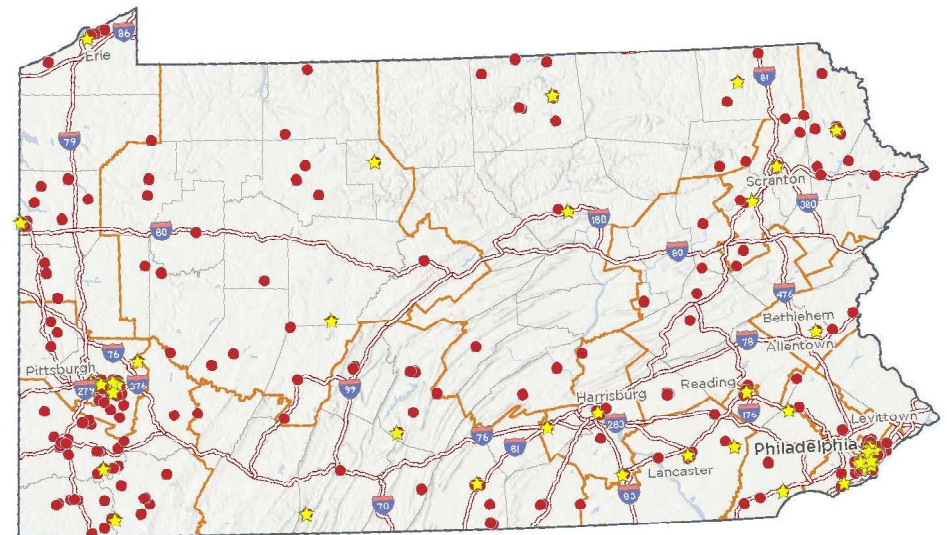
CHERI  
RINEHART



# PENNSYLVANIA'S COMMUNITY HEALTH CENTER/FQHC LANDSCAPE

**We Serve a Wide Range of Health Centers – from Small to Large, Urban to Rural**

- Patients: from 1,721 to 78,063
- Sites: from 1 to 37
- FTE: from 12.65 to 502.54
- Revenue: from \$399,024 to \$52,797,457



# PENNSYLVANIA PANDEMIC FUNDING TO FQHCs



Act 24 of 2020: **\$20 Million**

TESTING funding: **\$15 Million**

VACCINE funding: **\$26.633 Million**

HESITANCY funding: **\$26 Million**

**TOTAL: \$87.633 Million**

# NURSES LEADING HEALTH EQUITY IN PRACTICE

## Integrated Care

- Nurses leading care management teams that cross physical health, behavioral health, oral health, medication assisted treatment & more

## Coordination of Community Outreach

- Significant increase as a result of pandemic funding in training & utilization of Community Health Workers (CHWs)
- Partnership & collaboration

## Career Ladders

- Opening the door to economic security
- Teaching health centers

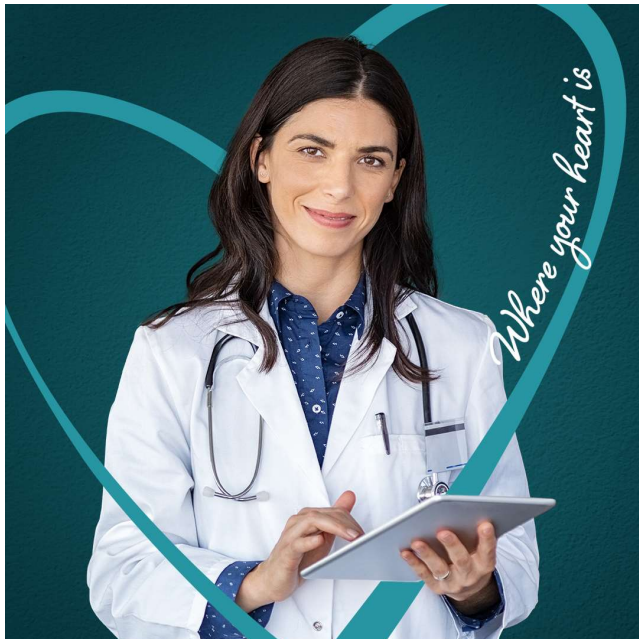
## Social Determinants of Health Response

- Coordination of response to identified needs
- Value-based care





# NURSES LEADING EQUITY IN PRACTICE



## Population Health

- Data-driven care
- UDS+

## Relationship Building

- Vaccine Hesitancy
- Progress happens at the speed of trust

## Community Engagement

- Mobile Units
- Responsiveness

# NURSES LEADING EQUITY IN PRACTICE



# NURSES LEADING EQUITY THROUGH PRACTICE MODELS

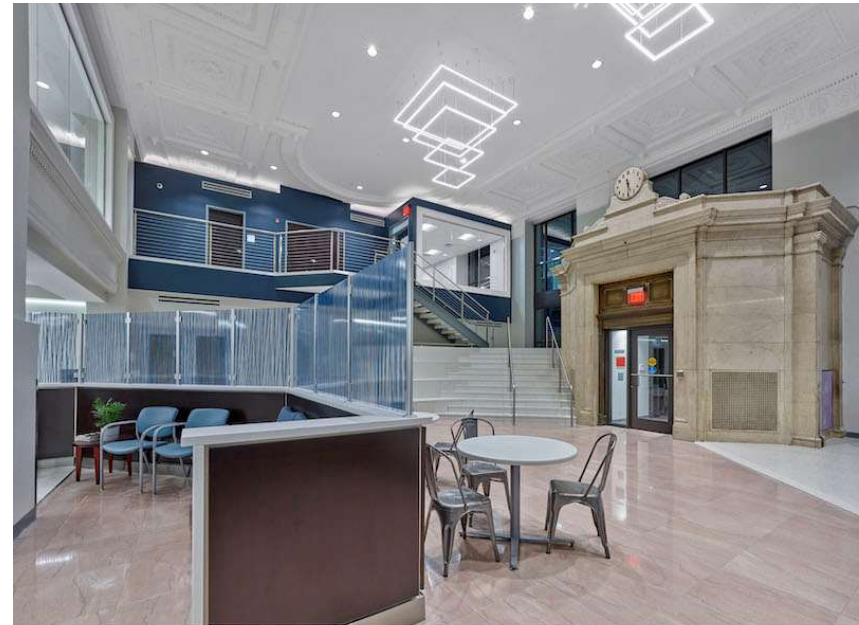


# NURSES LEADING EQUITY IN PRACTICE DESIGN





# NURSES LEADING EQUITY THROUGH PRACTICE DESIGN



# NURSES LEADING EQUITY IN PRACTICE DESIGN



A BETTER START & ESPERANZA HEALTH CENTER PRESENT

## FREE IN-PERSON NUTRITION CLASSES

Let's get ready for Spring with healthy eating!



FRUITS & VEGETABLES



STRETCHING FOOD DOLLARS



HEALTHY BEVERAGES



QUESTION AND ANSWER

**COME TO ONE OR COME TO ALL!**

**TUESDAYS AT 11AM**  
**ESPERANZA HEALTH CENTER**  
**4417 N. 6TH STREET**

MAY 3, 2022  
MAY 10, 2022  
MAY 17, 2022  
MAY 24, 2022

**SIGN UP TODAY!**  
CALL **OHSANA VALLE** AT  
215-302-3150, EXT. 323

# NURSES DRIVING EQUITY THROUGH AESTHETICS & EXCELLENCE

